

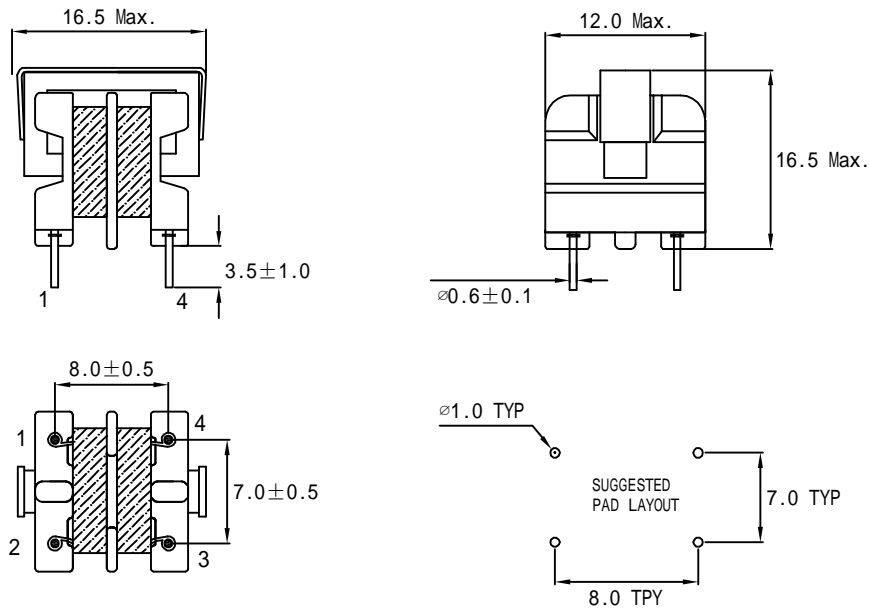
- Common mode chokes for SMPS
- High impedance to minimize common mode noise
- Excellent EMI performance
- Operate temperature range: -40°C to +85°C
- Storage temperature range: -40°C to +125°C



**Electrical Specifications @25°C**

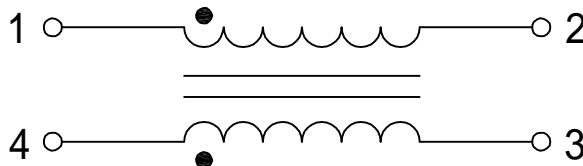
Part Number	OCL @10KHZ, 0.1V (mH Min.)	DCR (Ω Max.)	Turns Ratio	Rated Current (A Max.) ΔT ≤ 40°C	Hi-Pot
	1-2,4-3	1-2,4-3	1-2:4-3		1-2 TO 4-3
CM9R8DG103U	10	0.6	1:1	0.50	1000
CM9R8DG153U	15	1.5	1:1	0.40	1000
CM9R8DG203UA	20	2.0	1:1	0.30	1000
CM9R8DG303UA	30	3.0	1:1	0.25	1000
CM9R8DG403UC	40	5.0	1:1	0.15	1000

## MECHANICAL



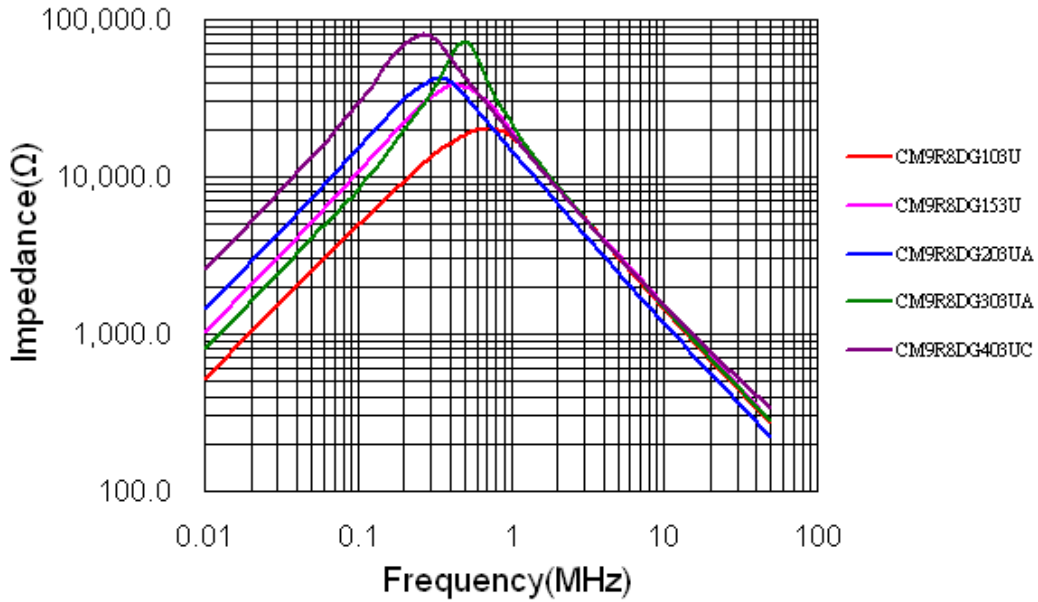
Unless otherwise specified all tolerances are: ±0.25 in mm

## SCHEMATICS

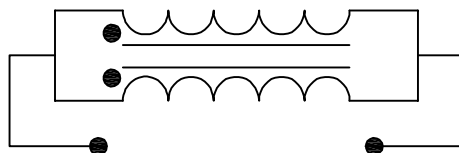
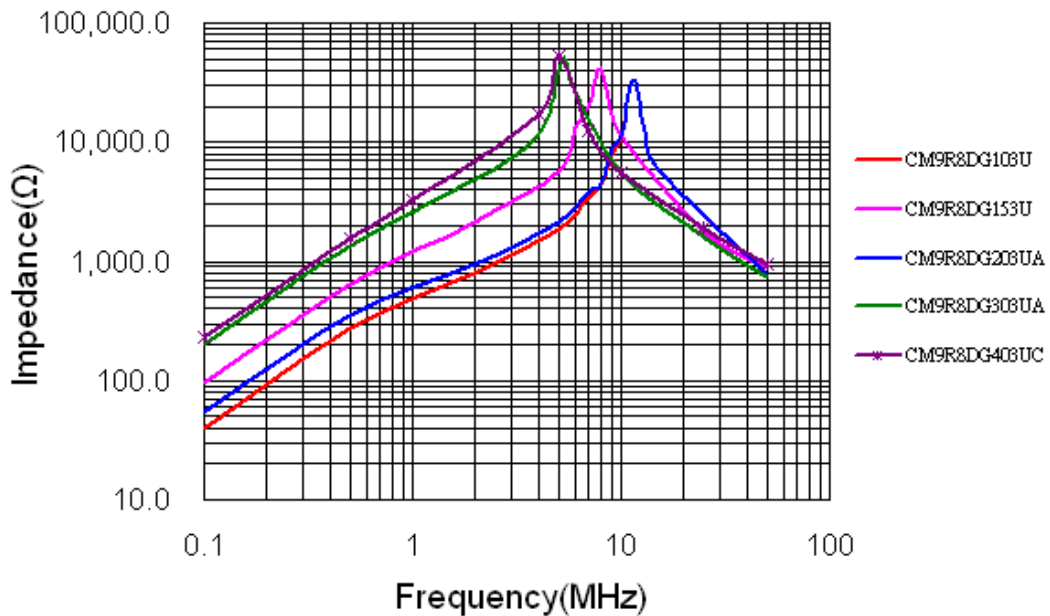


## Impedance Vs Frequency

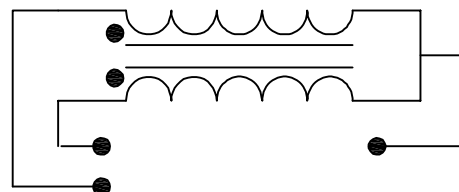
### Common Mode



### Different Mode



Common Mode



Different Mode